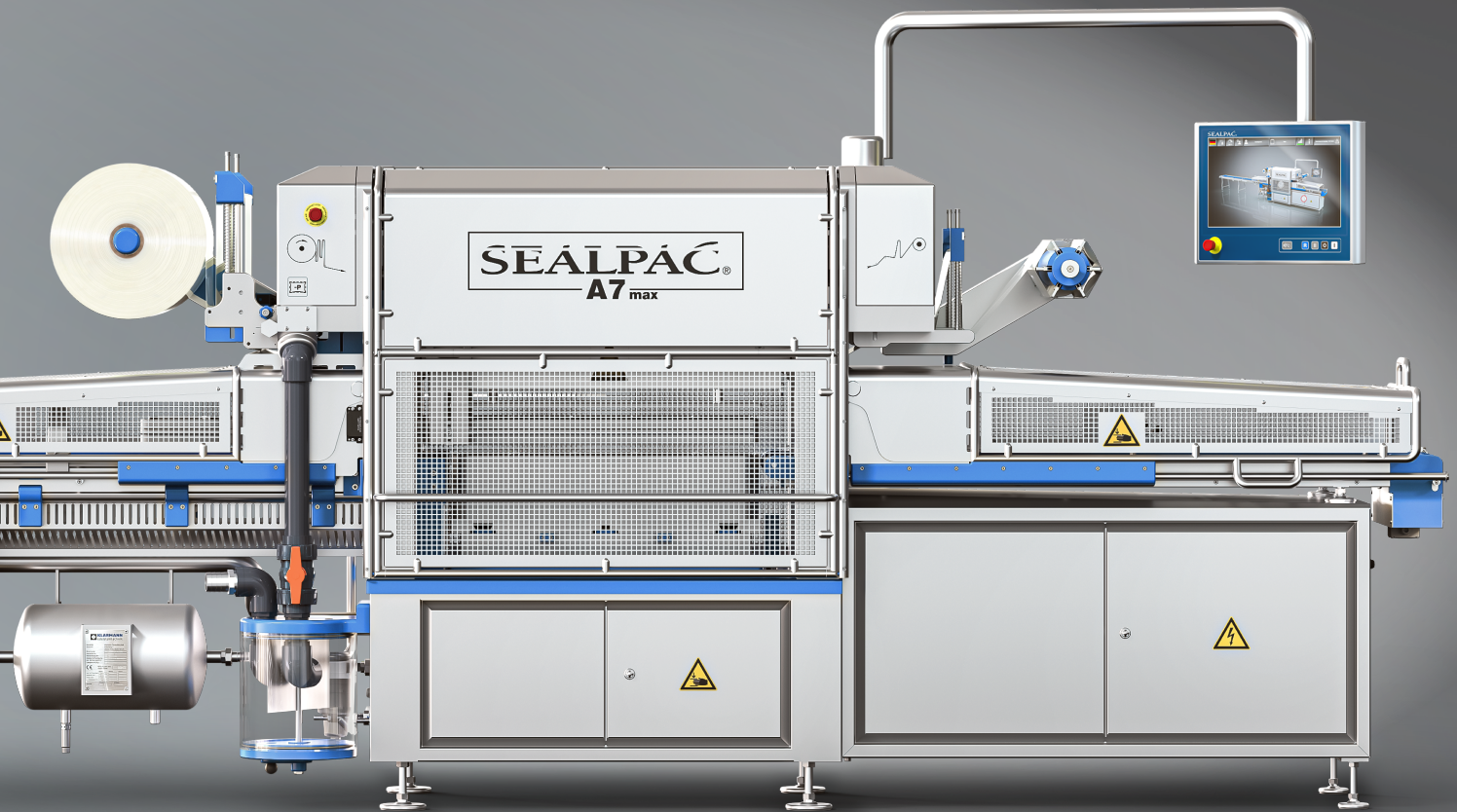


Premium-class TRAYSEALERS

SEALPAC® Amax



Maximum innovation, flexibility and performance

SEALPAC®

Forming Innovations



Cutting-edge
technology by SEALPAC

– bringing performance to the maximum

With SEALPAC right from the start

– optimized for years to come

SEALPAC is among the leading global developers of automated food packaging solutions. For years, we have set the tone with our extensive range of high-tech traysealers, made in Germany. Each of these machines incorporates the expertise, commitment and personal **passion** of our experienced engineers. Did you know that over 95% of the SEALPAC traysealers ever installed around the world are still in operation today?

With our new generation of SEALPAC Amax-series traysealers, we perfect what we have successfully developed over the past three decades. These high-quality traysealers prove their excellence in **performance** and reliability, even under extreme conditions. They go hand in hand with first-class service, which we provide through our qualified employees, as well as through our high degree of in-house production to ensure fast availability of spare parts. Last but not least, the flexibility and extremely long lifespan of the Amax traysealers always make them a **future-proof** investment.

In addition to their outstanding performance, the Amax-series is characterized by highest **durability**. This is made possible due to their extremely solid construction with parts manufactured mostly out of one piece. Wherever technically possible, we will refrain from using screw connections. An important prerequisite for detailed quality and low cost of ownership.

The sheer **versatility** of the SEALPAC Amax-series traysealers will convince in different markets: from cheese, fruit and vegetables, fresh meat and seafood, right up to convenience products and vegan foods. Right from the planning stage, you can tap into the extensive know-how and unmatched expertise of our global employees, who are always looking for the best possible packaging solution for you.

Our **service** scope is every bit as convincing: from digital remote maintenance to on-site technical support. Thanks to intelligent logistics, parts are always in stock and ready for global delivery. In addition, our state-of-the-art SEALPAC Experience Center provides operator and service technician training, as well as the opportunity to test new products before their market launch.

In short: the Amax-series traysealers are more than just a packaging machine. We allow you to benefit from our experience, which enables us to address your future packaging issues in today's machine design.

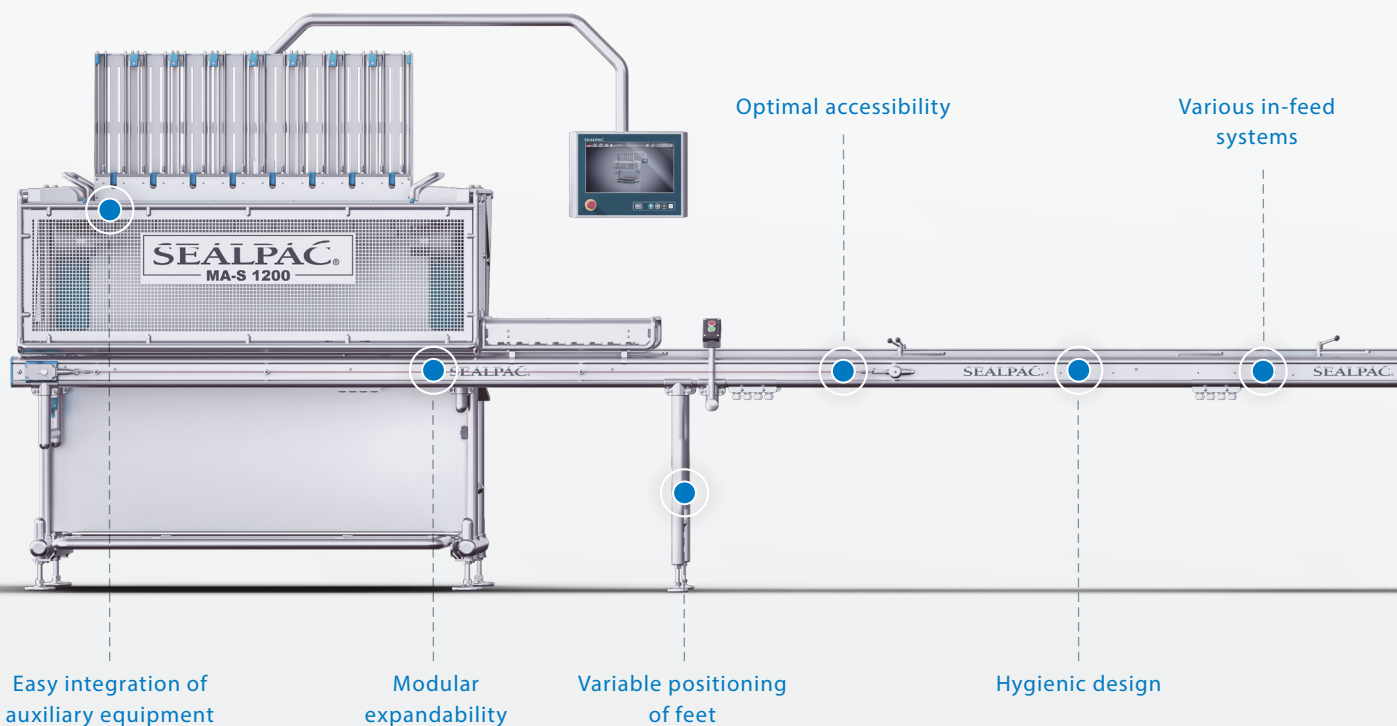


SEALPAC's machine technology is convincing: that is what our customers stand for. Emsland Frischgeflügel GmbH has been using SEALPAC traysealers since 2003. Today, Fabian Ahlers, Richard Wenneker and Frank Hausdorf (from left to right) feel well equipped with their SEALPAC A7max.

Designed and built to last for decades

– your careless future starts now

With the SEALPAC Amax traysealers, owing to their particularly intelligent design, you will benefit from long-term availability and extended durability. Thanks to their excellent drive coordination, the Amax traysealers are particularly energy efficient, will run with unrivalled smoothness and require less maintenance. By using servo technology, the air consumption of the machines can be reduced by up to 90%. Owing to a completely new approach to the traysealer's control process, we have been able to increase their line speed by up to 50%. This means that the packaging performance of the SEALPAC Amax-series can reach the maximum physical limits.



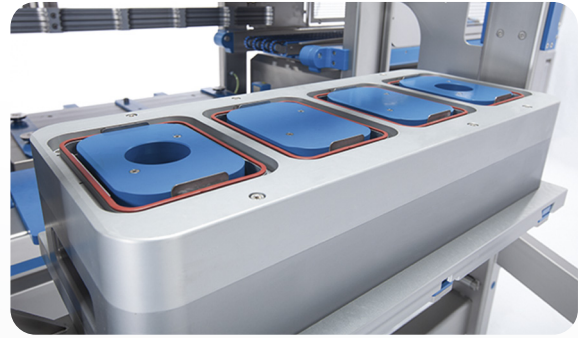
Clean

Due to their sophisticated hygienic design and highest safety standards, the Amax traysealers stand for enhanced protection of both product and personnel. Whether it concerns the stainless-steel body that can be hosed down, the integrated slopes that optimize water drainage, or the avoidance of interfering contours: our traysealers allow for fast, simple and reliable cleaning. As an option, transparent protective covers give operators control over production results at all times. These covers can be opened ergonomically and in a space-saving manner at working height to enable easy maintenance, cleaning and tool changes.

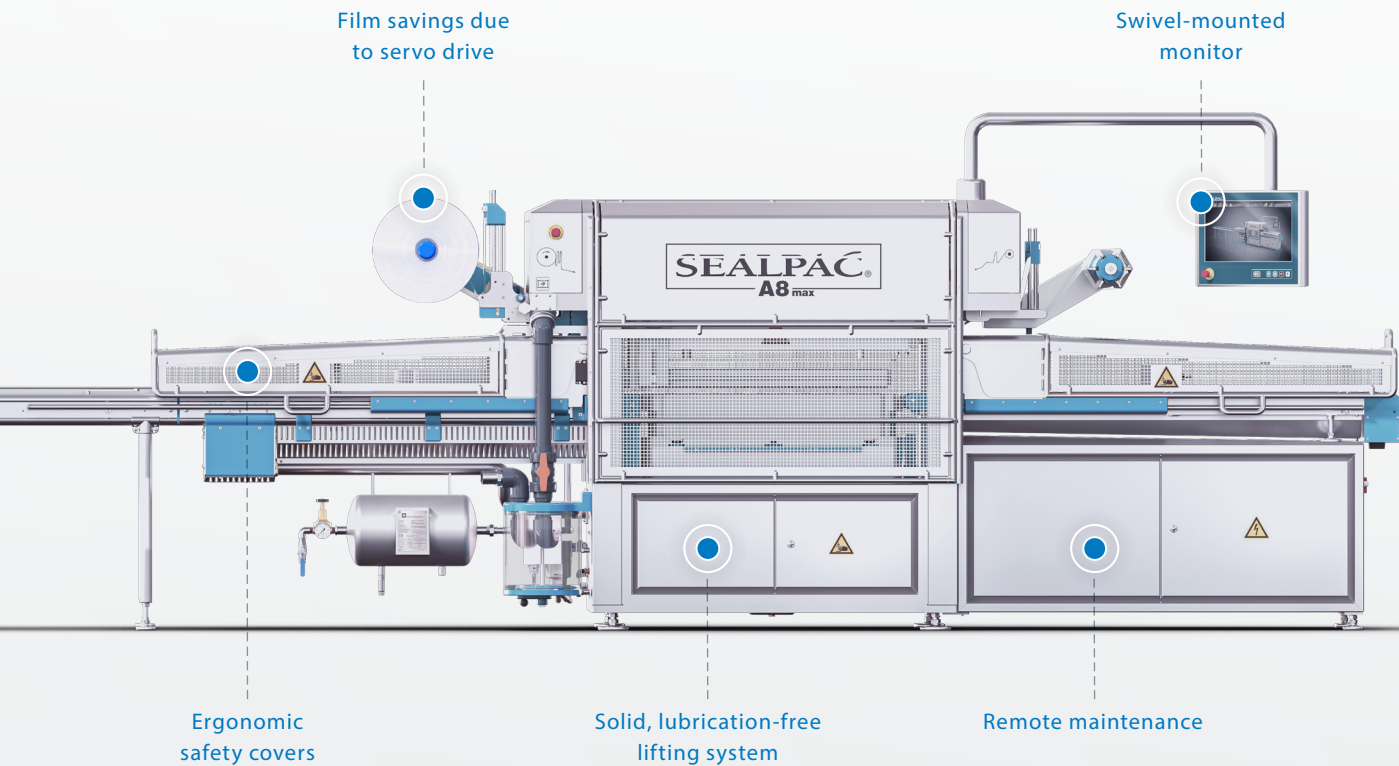


Safe

Each Amax traysealer is tested according to the strict German GS quality mark. This guarantees maximum safety for your operators. The scope of the GS mark includes essential product characteristics, such as electrical safety, ergonomics and noise, but also covers an evaluation of our factory production. Initially designed for the German market, it is now a worldwide recognized mark of quality and safety, which ensures that our traysealers adhere to the highest possible standards.



Our ultra-strong construction at a glance.



Up to 400 mln

Packs are produced on a SEALPAC traysealer during its entire lifetime.

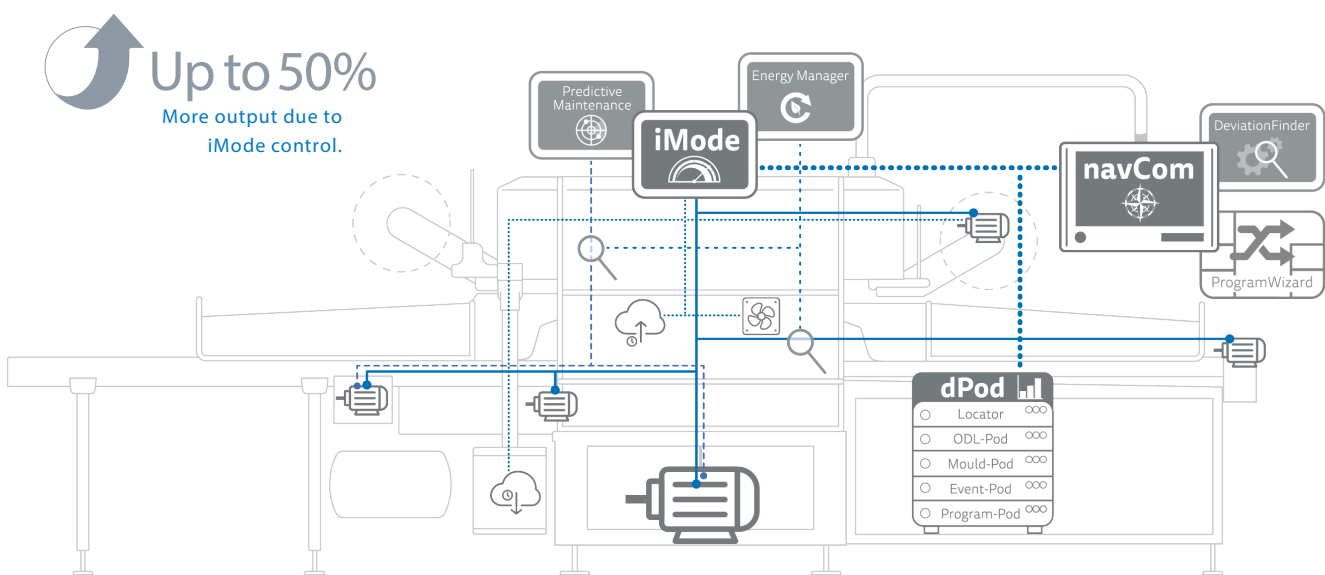


Open design, ergonomic access: the Amax-series traysealers simplify cleaning, maintenance and service.

Traysealers that think for themselves

– only physical conditions set the limits

By introducing the Amax-series, we have made our traysealers even more powerful, smarter, user friendly, safer and efficient. Packaging processes according to Industry 4.0 demand traysealers that can “make their own decisions”. Each model within the Amax-series is therefore equipped with the innovative **iMode** control. It manages the speed of the entire process according to a simple principle: the number of packages to be sealed per minute, as specified by the operator. This determines the speed of all subsequent processes. The result is an increasingly optimal packaging process, which, if necessary, extends to the maximum physical limits set by the product and the packaging materials.



Up to 50%
More output due to
iMode control.



Intuitive operating and maximum ease of use

Each SEALPAC traysealer within the Amax-series is equipped with the innovative **navCom** interface, short for navigations commander. All major functions can be found in just a few clicks from the home page. The integrated **ProgramWizard** assists in creating individual programmes. It contains a database with pre-set parameters for common types of trays and films, making the operator's life much easier.

User friendly:

Self-explanatory menu guidance through all functions of the HMI display, including swipe & scroll function.





Optimal performance:

Highest speeds, even when processing demanding types of packaging, such as ultra-light trays.



Future-proof with intelligent functions

The SEALPAC Amax-series traysealers offer you many additional features and functions, which always give you full control over your packaging process.

EnergyManager

This module adjusts the line speed to the actual tray feed, to keep energy consumption as low as necessary.

DeviationFinder

This feature locates discrepancies and displays them directly on the home page of the navCom operating system, to allow for fast problem solving.

dPod

This comprehensive database stores programmes, operating data, statuses, error messages, tooling data and maintenance information, to enable detailed analyses and support traceability.

PredictiveMaintenance

This intelligent maintenance requirement analysis calculates the optimum time to have the components of the traysealer serviced, based on actual machine output.

Remote support

This module offers a short-term solution to problems, as well as a fast resumption of the traysealer, in the event of possible disturbances.



The investment costs of our high-quality traysealers are less than 3% of the total line costs.



The SEALPAC traysealers within the Amax-series support the requirements of Industry 4.0 and therefore the digital transformation of your production: start your smart, interlinked factory of the future now!

Adaptable to every situation

– especially to yours

Our range of Amax-series traysealers starts with the compact **A4max** and **A5max**, which offer ideal solutions for smaller outputs. They are standard equipped with pneumatic lifting and linear systems, but come with all the benefits of the Amax-series, such as the operator-friendly navCom interface and iMode control.

For medium-sized companies, we offer our **A6max** and **A7max** traysealers. These combine flexibility with high outputs by using servo technology for the lifting and linear system. This allows for an extremely quiet operation with less wear and tear at a consistent high performance.

In mono lines with highest outputs and limited format changes, the SEALPAC **A8max** and **A10max** traysealers will be particularly convincing. These traysealers have been designed without compromise to provide long-lasting peak performances. Obviously, the A8max and A10max are completely servo driven.



Maximum output:

Also available in double lane.

 **Up to 30%**
More efficiency in
double lane execution.



Quick film and tooling exchange
without additional tools.

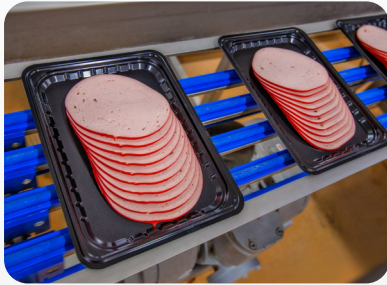
Tooling quick exchange system

Particular emphasis was placed on product changes without long interruptions. For this, SEALPAC has developed a number of features that make our traysealers true and cost-efficient all-rounders. These include the possibility for tooling exchange from both sides of the machine, the ability to operate the film transport system from two sides and the tooling quick exchange system with integrated power connections and unique SEALPAC trolley.

Non-stop efficiency

– across the entire line

From ultra-light trays to sustainable, extremely flat product carriers: no matter which packaging solution you choose, we always provide the right in-feed conveyor system. The various handling systems of the SEALPAC Amax-series ensure safe in-feed and transport. They are available in different executions, each optimally adapted to your application. To facilitate belt transfers, all traysealers are standard equipped with height-adjustable conveyors.



Polycord for processes that require specific flexibility.



Walking Beam for liquid products and trays with weak guidance.



Chain with pegs for processes that require specific reliability.

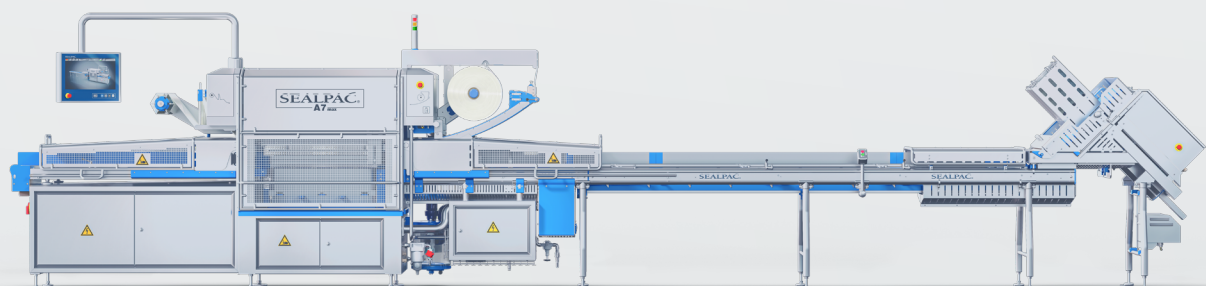
SEALPAC® Amax

Technical details

	A4max	A5max	A6max	A7max	A8max	A10max
Average output in cycles (trays) per minute* for...						
...sealing only:	14 (28)	14 (84)	18 (144)	18 (180)	18 (216)	18 (252)
...MAP:	12 (24)	12 (72)	15 (120)	15 (150)	15 (180)	14 (196)
...TraySkin®:	7 (14)	7 (42)	8 (64)	8 (80)	8 (96)	6 (84)
Power:	max. 8 kW	max. 8 kW	max. 12 kW	max. 12 kW	max. 12 kW	max. 15 kW
Air pressure:	6 bar	6 bar	6 bar	6 bar	6 bar	6 bar
Cooling water:	240 l/hour, max. 15 °C	240 l/hour, max. 15 °C	300 l/hour, max. 15 °C	300 l/hour, max. 15 °C	300 l/hour, max. 15 °C	360 l/hour, max. 15 °C

*Based on 190x144 mm tray. Always depending on product, tray format, etc.

All rights reserved for technical modifications.



Easy integration in production lines

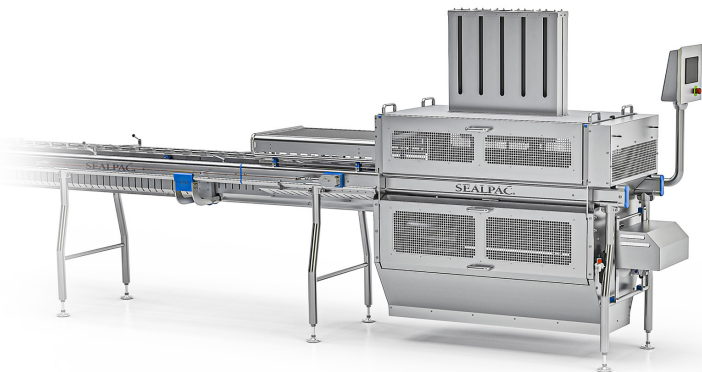
– full concepts from start to finish

Our high-performance traysealers can be easily integrated into existing production lines and allow for flawless synchronization with auxiliary equipment. With our range of denesters and lidding systems, we offer you endless possibilities to turn your SEALPAC Amax traysealer into a full line solution with highest efficiency. You benefit from integrated solutions from a single source with maximum operating and process reliability: always on the desired scale and expandable to meet future requirements.



> 33%

More products in the tooling
due to the Long Side Leading
transport system.



AS-LS1200

This single- or double-lane denester, which is integrated into the in-feed section of your traysealer, uses servo drive to remove the trays from their linear magazine.



MD-S1200

This lidding system with extra-large magazine, also available in double lane execution, increases the number of lids applied per cycle.



MA-S800

Compact, fully electronic and available in both single and double lane execution: thanks to its servo drive, this denester offers an unlimited variety in movements.



AS-RS

Our flexible solution with smallest footprint: ideal for your entry into automatic loading of trays in various formats.

Always there for you: globally and locally

We offer you custom-made service, which is tailored to your company's needs. This gives you the opportunity to use our expertise to your maximum benefit under clear and calculable terms. No matter where your company is based, we are more than ready to support you.

More than just machine engineering

– ready to meet all packaging demands

We create future-proof packaging solutions that are perfectly tailored to the needs of the market and its requirements. These solutions stand for best product protection, optimized logistics and costs, as well as an attractive design, extended shelf life and reduced food waste. With innovative materials and material combinations, we help to conserve resources and support our customers' sustainability goals. We know the industry-specific requirements for optimal packaging results and transfer these into solutions that combine innovation, process reliability and maximized benefits for manufacturers, retailers and consumers.

GO sustainable!

It is our goal to design packaging solutions in a recycling-friendly way from the very start. These include our particularly resource-saving applications, such as EasyLid®, eTray®, FlatSkin® and FlatMap®, which reduce the amount of plastic used in packaging by up to 75%.



EasyLid®
Sealing and lidding in one single step.



eTray®
Printable cardboard base with thin plastic inlay.

Future proof

Our Amax-series traysealers can be used for almost any application, be it hot or cold filling, skin packaging or modified atmosphere packaging, as well as the latest in sustainable packaging systems. They can all be run on the same base machine. Furthermore: our proven InsideCut and EasyPeelPoint features allow for attractive, easy-to-open packaging solutions. Particularly beneficial for modified atmosphere packaging: our SEALPAC MAP+ system optimizes gas values, reduces gas consumption and shortens cycle times.

Up to 30%

Less film consumption whilst achieving an excellent product appearance with InsideCut.



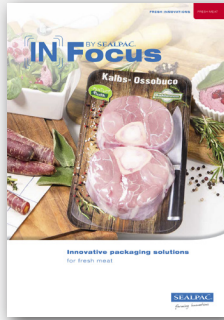
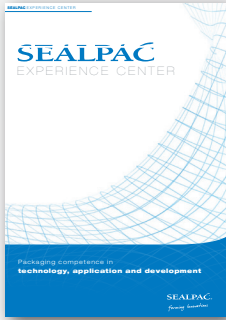
FlatSkin®
Vacuum skin packaging on cardboard with separate disposal and recycling of the components.



FlatMap®
Paper-based product carrier with protective polymer layer and unique reclosability.

Discover more:





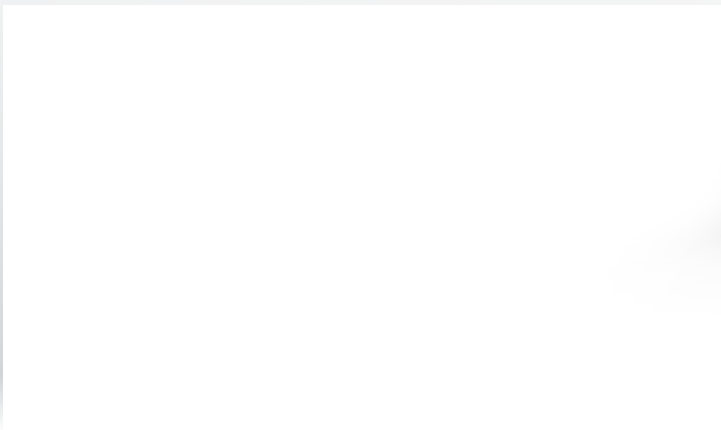
Discover more:



The full programme

Learn more about SEALPAC's pioneering developments: from our high-quality thermoformer solutions to special packaging systems for various product segments in the food industry. Our SEALPAC Experience Center enables professional training of your technicians and service staff, as well as testing the marketability of your new products. Find out for yourself: your personal SEALPAC consultant will be glad to tell you more!

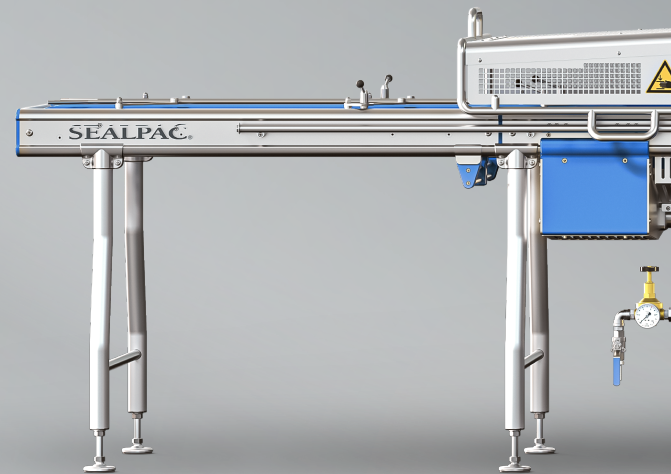
Your SEALPAC distributor:



SEALPAC – your package to success.

As a high-precision manufacturer, we support our customers in reaching their targets. We work together to create cost-effective and guaranteed high-quality solutions. Our flexible and dedicated approach will guide you in exploring individual alternatives to help shape your future.

SEALPAC International bv | Langekamp 2 | NL-3848 DX Harderwijk
Telephone: +31 (0) 341 46 20 30 | info@sealpacinternational.com | www.sealpacinternational.com



SEALPAC®

Forming Innovations